

R 332



Vehicle type

Operating areas

System load

Engine

Tractor weight

Type of engine

Transmission

5th wheel plate

Lifting capacity

Wheel base

Speed

Axles

Cabin

R 332

Seaports and Industry

up to 220,460 lbs. (100 ton) (GCW)

Diesel

approx. 21,605 lbs. (9.800 kg)

VOLVO or Mercedes from each 248 HP up to 281 HP (185 kW / 210 kW)
(exhaust emission stage Tier 4 final)

ZF 6WG211

Holland Eurohitch 3510-TR for 2" kingpin

up to 70,550 lbs. (32.000 kg)

128" (3.250 mm)

up to 23.6 mph (38 km/h)

Front axle type Kessler
Rear axle type Kessler

ROPS and FOPS certified
With rear sliding door and side door
Windshield and rear window made of laminated glass



Please see our technical data sheet for more information

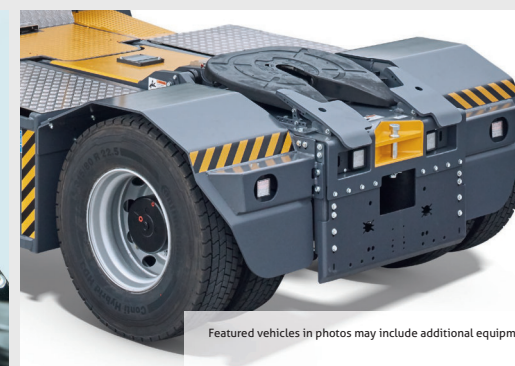
MAFI R 332

Your RoRo Tractor For Seaports And Industry

MAFI R Series tractors are preferred for the transportation of heavy loads in seaports and industry. These tractors can operate semi-trailers, goosenecks as well as drawbar trailers in combination with a ballast weight.

The vehicle is equipped with part time four-wheel drive and can accommodate 5th-wheel load of up to 32 tons. A spacious cabin, with an ergonomically designed swivel seat console (180°), offers the driver maximum driving comfort.

Stairs on both sides of the tractor frame allow easy access into the cabin via the rear sliding door. The robust frame has been designed to meet the tough requirements of the tractor's various applications. Well-known name brand components ensure a high availability of spares and a lower cost of ownership.



Featured vehicles in photos may include additional equipment.